

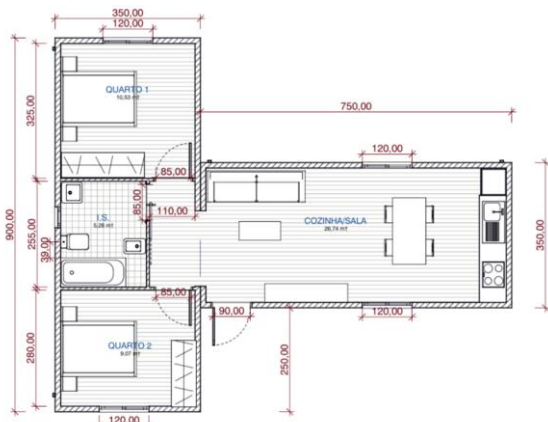
1

INCLUDED IN STANDARD MODEL PRICE

- 2 modules (7,5mx3,5m, 9mx3,5m)
- Completely Furnished – per floor plan – see technical specifications for details*
- Delivery and Installation in continental Portugal
- VAT
- Architectural & Specialty Projects Preparation
- Follow-up throughout the licensing/permitting process
- Up to A+ Energy Certification
- 150L Solar Powered Water Heater
- Wood cladding for chassis
- Cement Foundation
- 2,5 meter ceiling height

- **Living Room/Dining Room**
 - Sofa
 - Coffee Table
 - Custom TV Table
 - Dining Room Table w/ 4 chairs
 - Pre-installation for Air Conditioning
- **Kitchen**
 - Upper/Lower cabinets
 - Electric hob/Exhaust hood/Oven (cooker)
 - 305L refrigerator
 - Clothes washing machine
 - Pre-installation for dishwasher
- **2 Bedrooms**
 - Double or single beds (per floorplan)
 - Night stands
 - Built-in Wardrobe
 - Pre-installation for Air Conditioning
- **1 WC**
 - Vanity w/mirror
 - Stylish toilet
 - Bath Tub (in family bathroom)
 - Bidet (in family bathroom)
- **Flooring**
 - Laminate floor throughout
 - Ceramic tile in WCs
- **Windows & Doors per floorplan**
 - 90cm entrance door (in frosted glass)
 - (4) 120x100 sliding windows w/electric shutters
 - (1) 50x100 tilting Window

** Standard items included in our price. Other materials, colours, equipment and different options may be available for the same price, however, in these instances we will provide you with a quotation.
Standard Model Price subject to change without notice.*



2

NOT INCLUDED IN STANDARD MODEL PRICE BUT NECESSARY FOR PROJECT COMPLETION**

- Site/Land Preparation
 - Clearing of Land
 - Preparation for cement Foundation
 - Trench digging for external networks/connection to external networks
 - Burying of tanks for water deposits and septic systems
- Installation of External Electricity Network
- Installation of External Water Network
- Installation of External Sewage Network
- Crane Unloading Service
- Fees required by official entities responsible for licensing & permits
- Use License

**** KITUR CAN MANAGE THESE ASPECTS OF THE PROJECT FOR YOU. ALL PRICING FOR THESE ITEMS ARE QUOTED ON A CASE BY CASE BASIS, AS THE COSTS OF THESE ITEMS ARE SOLEY DEPENDENT ON THE LAND WHERE YOUR HOUSE WILL BE INSTALLED.**

3

ADDITIONAL FEATURE UPGRADES NOT INCLUDED in STANDARD MODEL PRICE***

- Terraces or other outside structures
- Interior or exterior finishings not according to the General Specifications and Standard Model Definitions.

*** Pricing provided upon request